



*Hammond
& Smith*

Foster Street, Harlow, CM17

£750,000 In Excess of

*Hammond
& Smith*

Property Description

A picture perfect four bedroom home perfectly placed in Foster Street, Hastingwood. Here you have all the benefits of rural living with the towns Epping and Harlow just a short drive away. A real super spot!

Arriving at the gated driveway of Ivydene you cannot help but be impressed by the captivating cottage style and picturesque open space. The front driveway offers room for multiple cars, perhaps space for a growing family or for when entertaining guests. Two small steps lead the way into the pretty front porch and spacious entrance, with the lounge sitting to the right. Quietly stunning, the lounge includes some fantastic features from the wood burning stove, exposed painted beams and window box seat. To the left of the home sit three of the four double bedrooms, each providing terrific space. The large family bathroom sits alongside the bedrooms, a calming space equipped with roll top bath, separate shower and Victorian style towel rail. Sitting to the rear of this wonderful home is the open plan kitchen/living space, along with the dining room. With its glass extension, the kitchen/living space offers stunning light and breath-taking views. Blessed with traditional style Clive Christian kitchen and butler sink, the kitchen overlooks the extension, making it the perfect spot to entertain guests.

Heading upstairs you will find a large landing area currently being used as an ideal home office. The top floor also provides a shower room, storage room and the fourth bedroom - an ideal location for a master suite.

Outside the views are breath-taking. Here you will find approx 600ft of lush green space with a patio area and large outbuilding measuring in excess of some 450sqft with electrics, running water and Velux windows. It would make fantastic gym space, home office, studio.... the options are endless. Picture summer garden parties and family gatherings, or simply lawn lounging on a



summers day!.

Located on the outskirts of Harlow and Hastingwood, Foster Street is a great location. Here you have good connections to the M11 and plenty of treasures to visit nearby. New to the location? We recommend a trip to The John Barleycorn Pub for a nice Sunday lunch, or a short drive or country walk to Churchgate Street area where you will find the delicious Mayfield Farm Bakery and superb gourmet sausages at Churchgate Sausage Shop. The area also offers some fantastic school from Henry Moore Primary to Saint Nicholas School. A winner all round!

EPC Rating: D

Key Features

- ✓ FOUR DOUBLE BEDROOMS
- ✓ PLANTATION SHUTTERS
- ✓ 600FT GARDEN
- ✓ STUNNING VIEWS
- ✓ LARGE GARDEN OUTBUILDING
- ✓ WOOD BURNING STOVE
- ✓ SIDE ACCESS
- ✓ CLOSE TO SAINT NICHOLAS SCHOOL



Rooms

Porch

Entrance Hall

Lounge

14' 6" x 10' 10" (4.42m x 3.3m)

Dining Room

Kitchen Area

Conservatory

Bathroom

Bedroom

Bedroom

Bedroom

First Floor

Bedroom

Shower Room

Storage Room

External Areas

Garden

Off Road

5 Parking Spaces





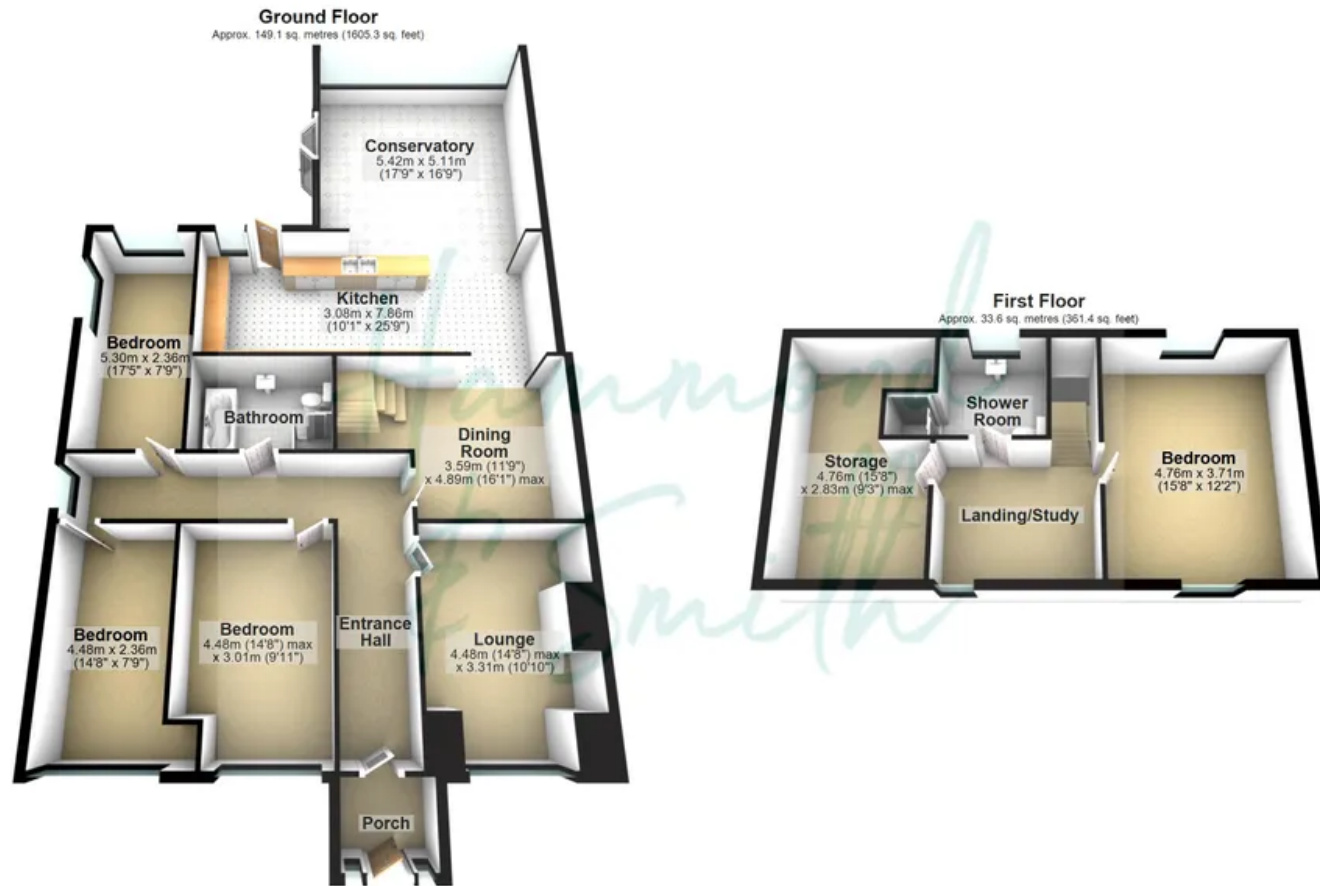




Hammond
LL



All



Total area: approx. 182.7 sq. metres (1966.7 sq. feet)

Floorplans are provided for guidance only. They are not to scale & must not form any part of a legal contract or be reproduced
Plan produced using PlanUp.

Hammond & Smith

01992 919 007

hello@hammondandsmith.co.uk

